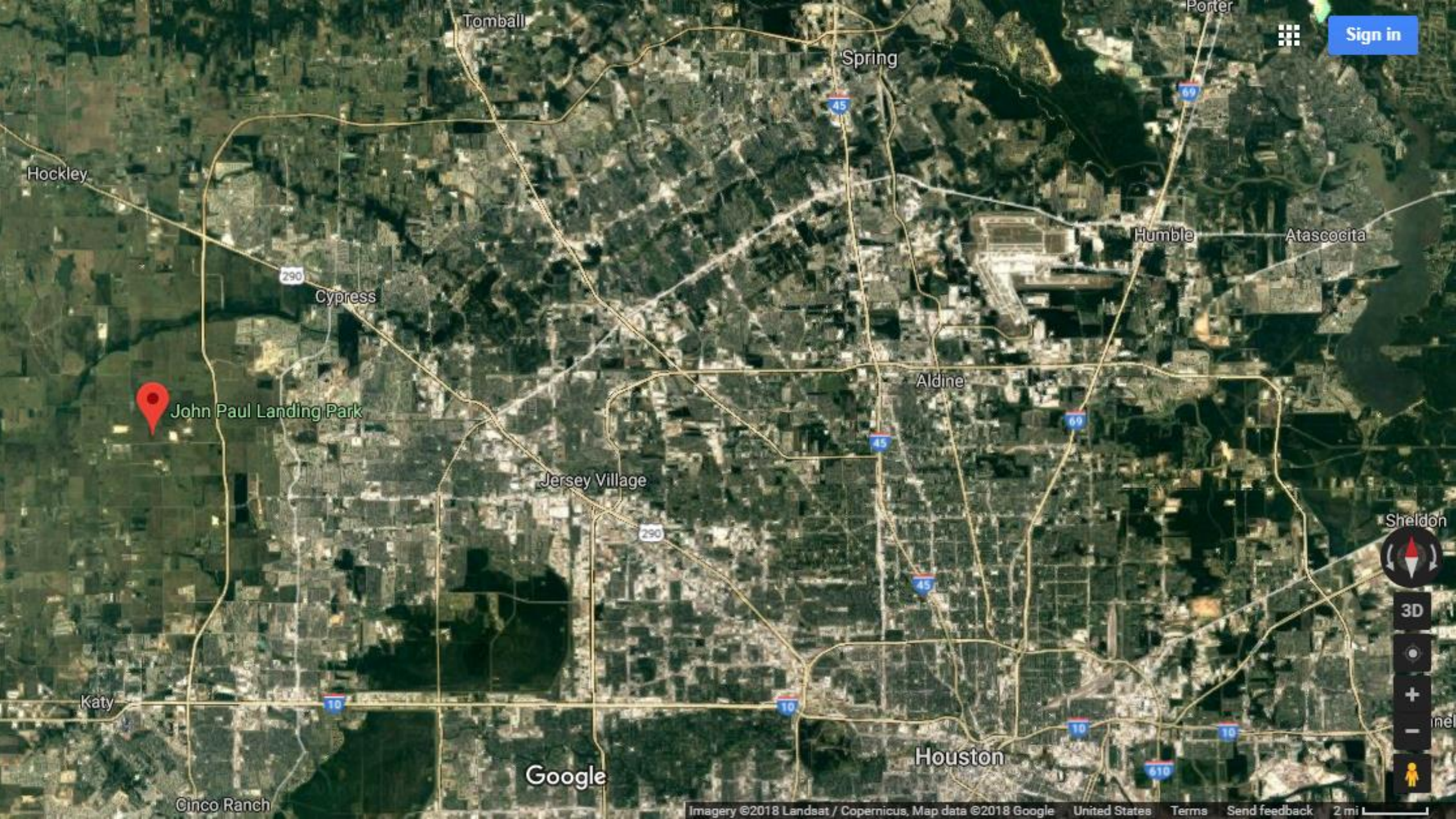


# John Paul Landing

## A Lesson in Partnerships

Niki Ragan-Harbison, TPWD





Sign in



John Paul Landing Park

Sheldon



3D



+

-



Google



# A Man Who Likes to Fish

**Commissioner Steve Radack**  
Harris County Precinct 3

# The Man Who Makes it Happen

**Mike McMahan**

Special Activities Coordinator

Harris County Precinct 3



	Original Pond Excavation	— 35.75 Acres
	HCFCD Pond Excavation	— 51.25 Acres
	Planned West Road Excavation	— 50.25 Acres
Total Area — August 2017		— 137.25 Acres



1" = 200' (Horizontal)  
 1" = 40' (Vertical)



HARRIS COUNTY  
PRECINCT THREE



02.24.2017

Future Home of  
John Paul Landing

FedEx Ground Cypress TX

Google Earth

1944

Imagery Date: 2/24/2017 29°54'51.93" N 95°46'53.15" W elev 161 ft eye alt 15617 ft



FedEx Ground Cypress TX

Google Earth











Fishing Piers have  
green lights and  
covered seating.





# Magnolia West Anglers Club

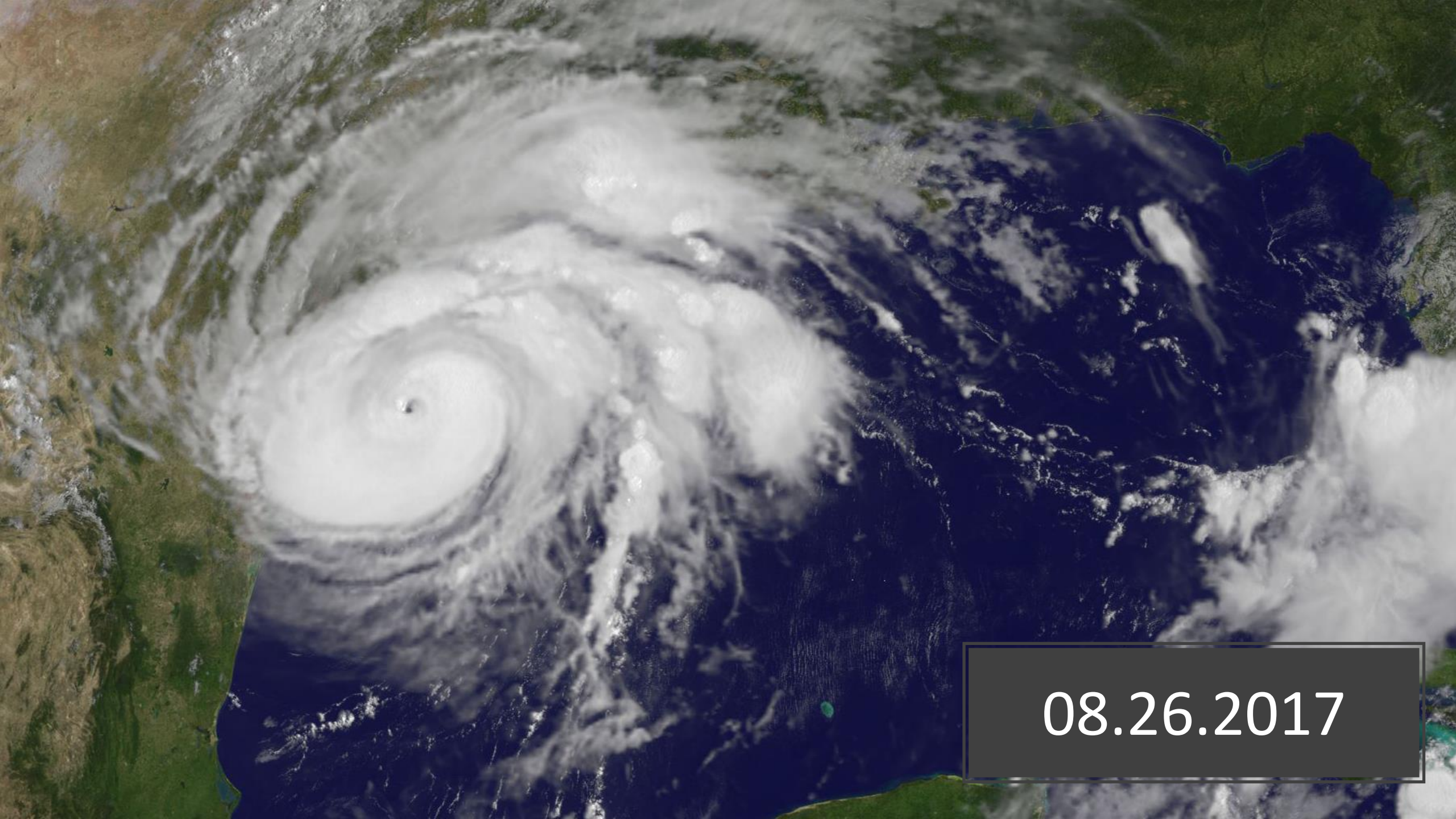
- Began as a sport-fishing club for 4-H
- After 3 years became a school-sponsored club (2014).
- Club's original roster had 6 students.
- Membership grown to 34.
- Pass to play.
- Teacher younger students to fish, including elementary students.
- Also participate in community service.





08.21.2017

---



08.26.2017



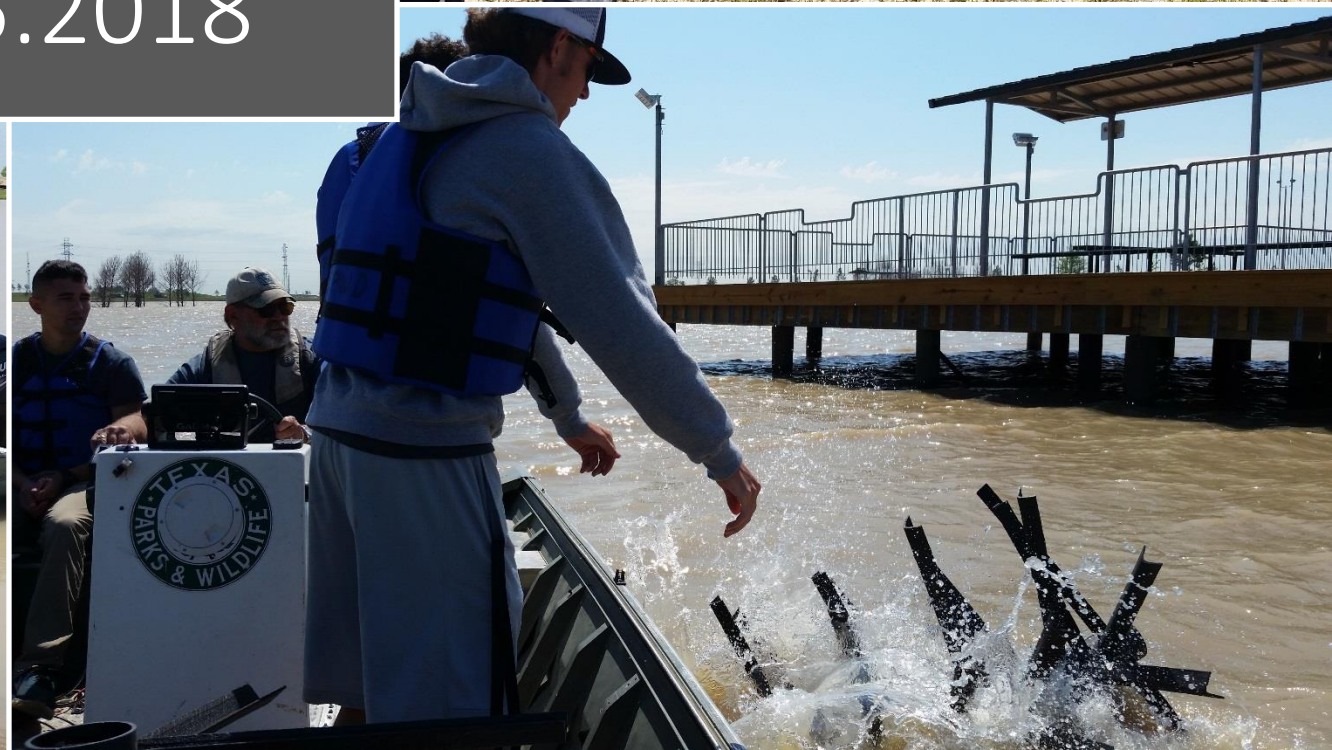
# FOR Mossback Grant

- Team Captain consulted with TPWD to write grant.
- Received \$1,000 Grant from Friends of Reservoirs to purchase Mossbacks.
- Cinder blocks and concrete donated by local McCoys.
- Solidified school support of the fishing club.





04.05.2018







# TAMU Aquaculture, Teaching, and Research Facility

---

COASTAL FISHERIES



Repurposed Fish Vats into Fish Structure

---

# Questions?





TACKLEADDICT  
**BASSMASTER**

**MUSTANG**  
**BASEBALL**

**Hulk**  
PERFORMANCE FISHING

**Carhartt**

**Carhartt**



**Fishing Never Felt So Good™**

	Original Pond Excavation	— 35.75 Acres
	HCFCD Pond Excavation	— 51.25 Acres
	Planned West Road Excavation	— 50.25 Acres
Total Area — August 2017		— 137.25 Acres



1" = 200' (Horizontal)  
 1" = 40' (Vertical)  
 1" = 10' (Diagonal)



HARRIS COUNTY  
PRECINCT THREE





# Future Home of John Paul Landing



FedEx Ground Cypress TX

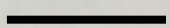
Texas Orthoimagery Program

Google Earth

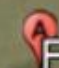
1944

Imagery Date: 12/31/2008 29°54'51.93" N 95°46'53.15" W elev 161 ft eye alt 15617 ft

# 12.31.2008





Future Home of  
John Paul Landing

 FedEx Ground Cypress TX

Texas Orthoimagery Program

Google Earth

 1944

Imagery Date: 12/31/2008 29°54'51.93" N 95°46'53.15" W elev 161 ft eye alt 15617 ft 

01.27.2011

---

Future Home of  
John Paul Landing

FedEx Ground Cypress TX

Google Earth

1944

Imagery Date: 1/27/2011 29°54'51.93" N 95°46'53.15" W elev 161 ft eye alt 15617 ft

# 11.21.2015

Future Home of  
John Paul Landing

FedEx Ground Cypress TX

Google Earth

1944

Imagery Date: 11/21/2015 29°54'51.93" N 95°46'53.15" W elev 161 ft eye alt 15617 ft

04.22.2016

Future Home of  
John Paul Landing



FedEx Ground Cypress TX

Image © 2018 DigitalGlobe

Google Earth

1944

Imagery Date: 4/22/2016 29°54'51.93" N 95°46'53.15" W elev 161 ft eye alt 15617 ft