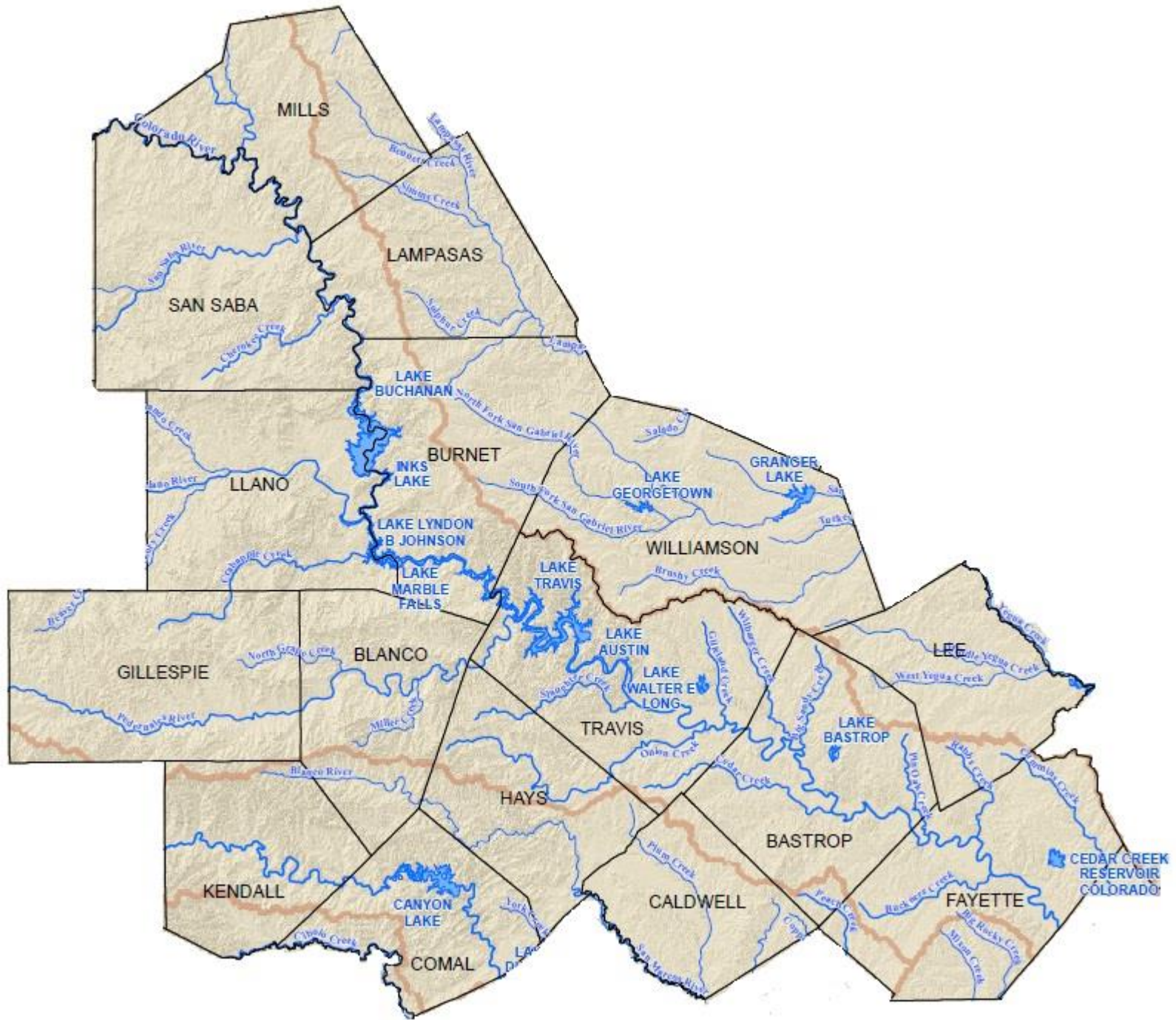
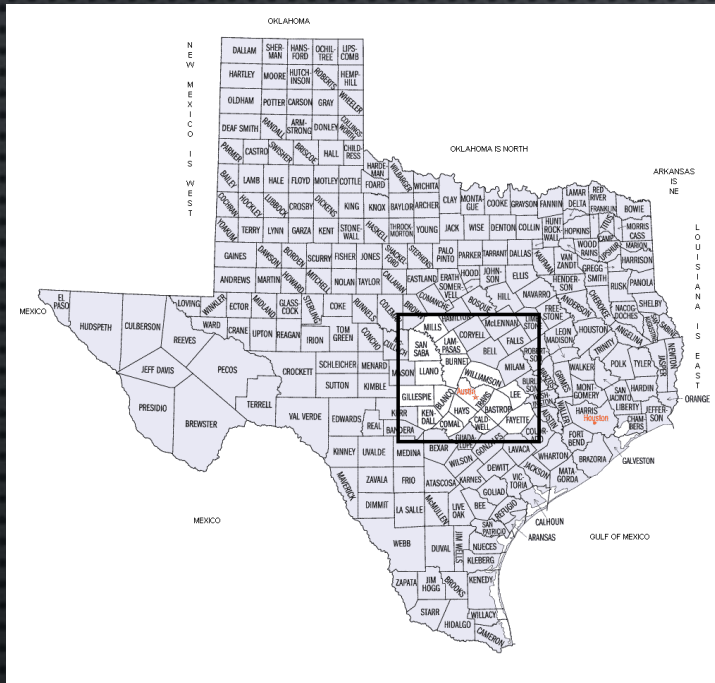
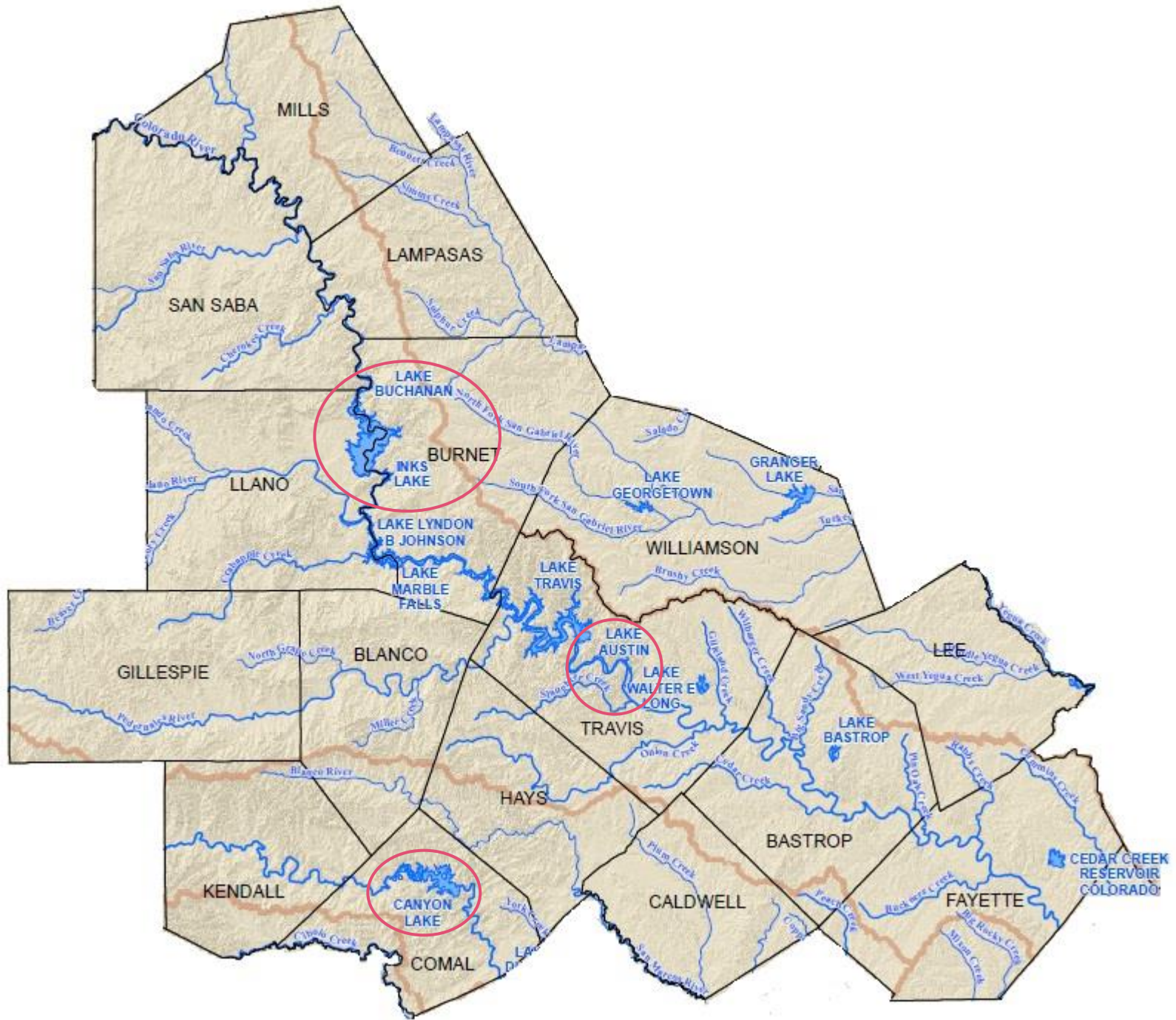
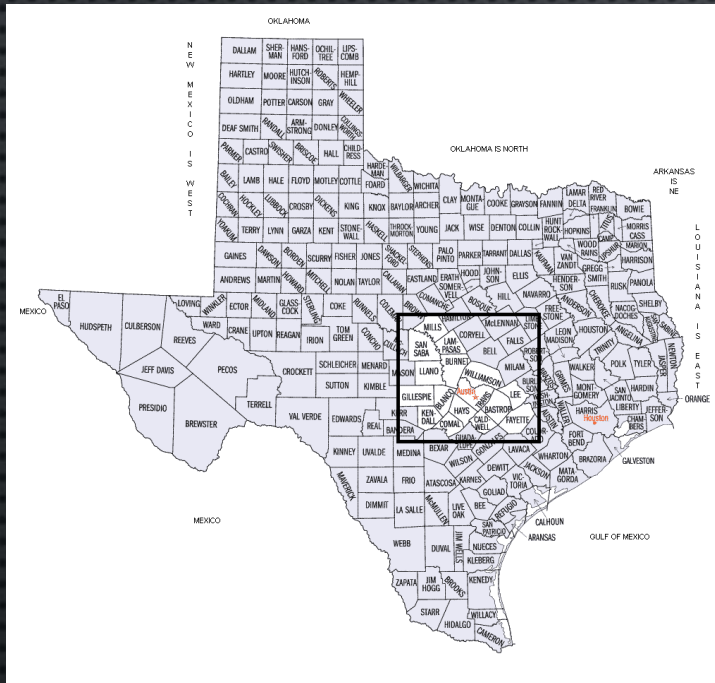


# FISH HABITAT ENHANCEMENT IN CENTRAL TEXAS

FRIENDS OF RESERVOIRS PARTNERSHIPS







# ENHANCING FISH HABITAT AT CANYON LAKE, TEXAS

# CANYON LAKE

- 8,308 ACRES
- STEEP ROCKY CANYON TYPE RESERVOIR
- BUILT IN 1964 BY USACE
- GUADALUPE RIVER MAINSTEM
- NO ESTABLISHED AQUATIC VEGETATION
- BOULDERS AND DEGRADED TREES SERVE AS NATURAL FISH HABITAT

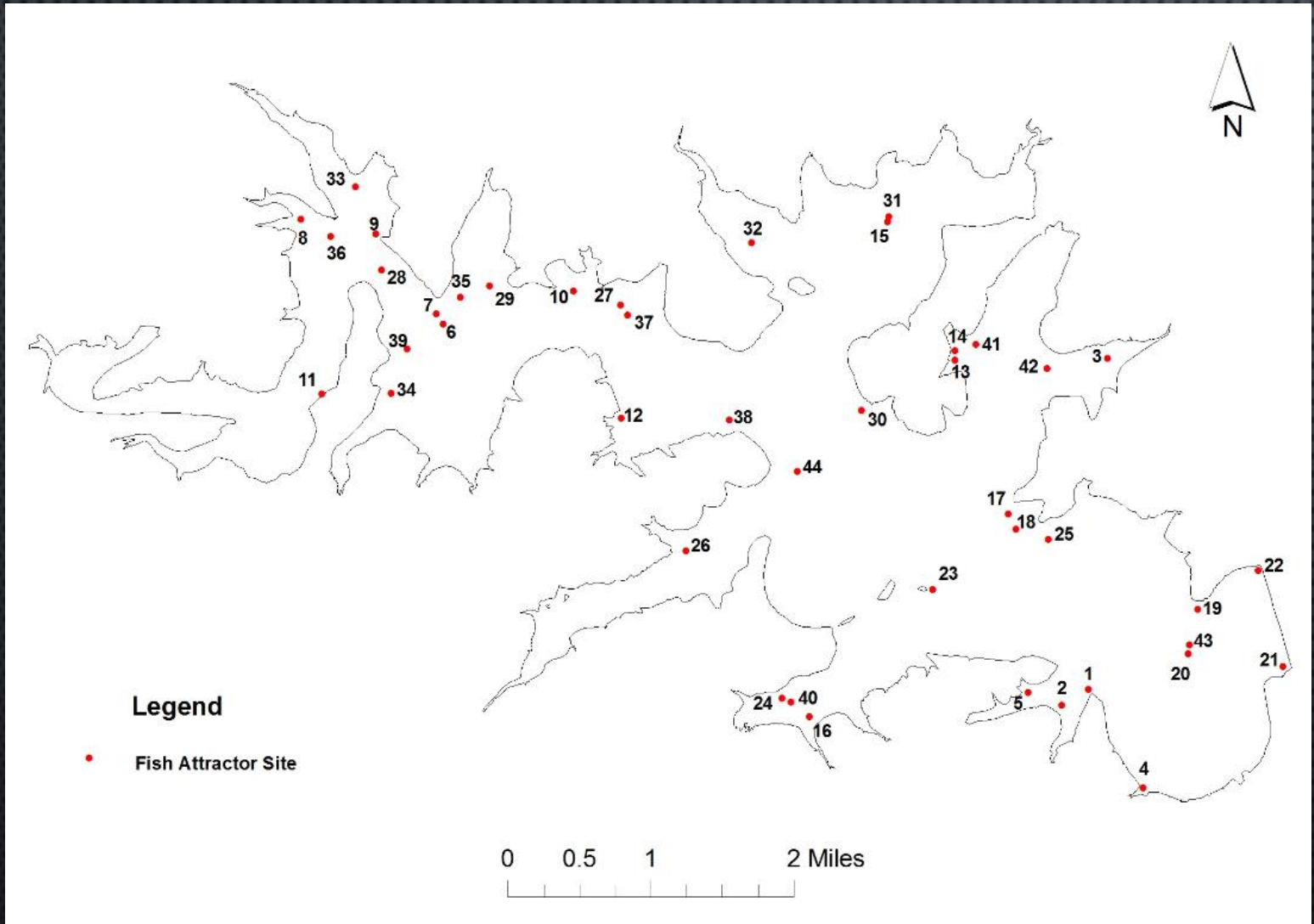


# CANYON LAKE HABITAT PROJECT

- ESTABLISHED IN 2005
- SUNKEN ASHE JUNIPER TREES  
(MOUNTAIN CEDAR)
- MULTIPLE PARTNERS, LED BY FOR  
CHAPTER: CBCSM
- 44 FISH HABITAT SITES MAINTAINED



# CANYON LAKE HABITAT PROJECT



# CANYON LAKE HABITAT PROJECT





# CANYON LAKE HABITAT PROJECT



ENHANCING FISH HABITAT IN  
THE HIGHLAND LAKES IN  
CENTRAL TEXAS

# LAKE BUCHANAN

- 22,211 ACRES
- BUILT IN 1937 BY LCRA
- COLORADO RIVER MAINSTEM
- SANDY AND ROCKY SUBSTRATE
- NO ESTABLISHED AQUATIC VEGETATION
- BOULDERS AND DEGRADED TREES SERVE AS NATURAL FISH HABITAT

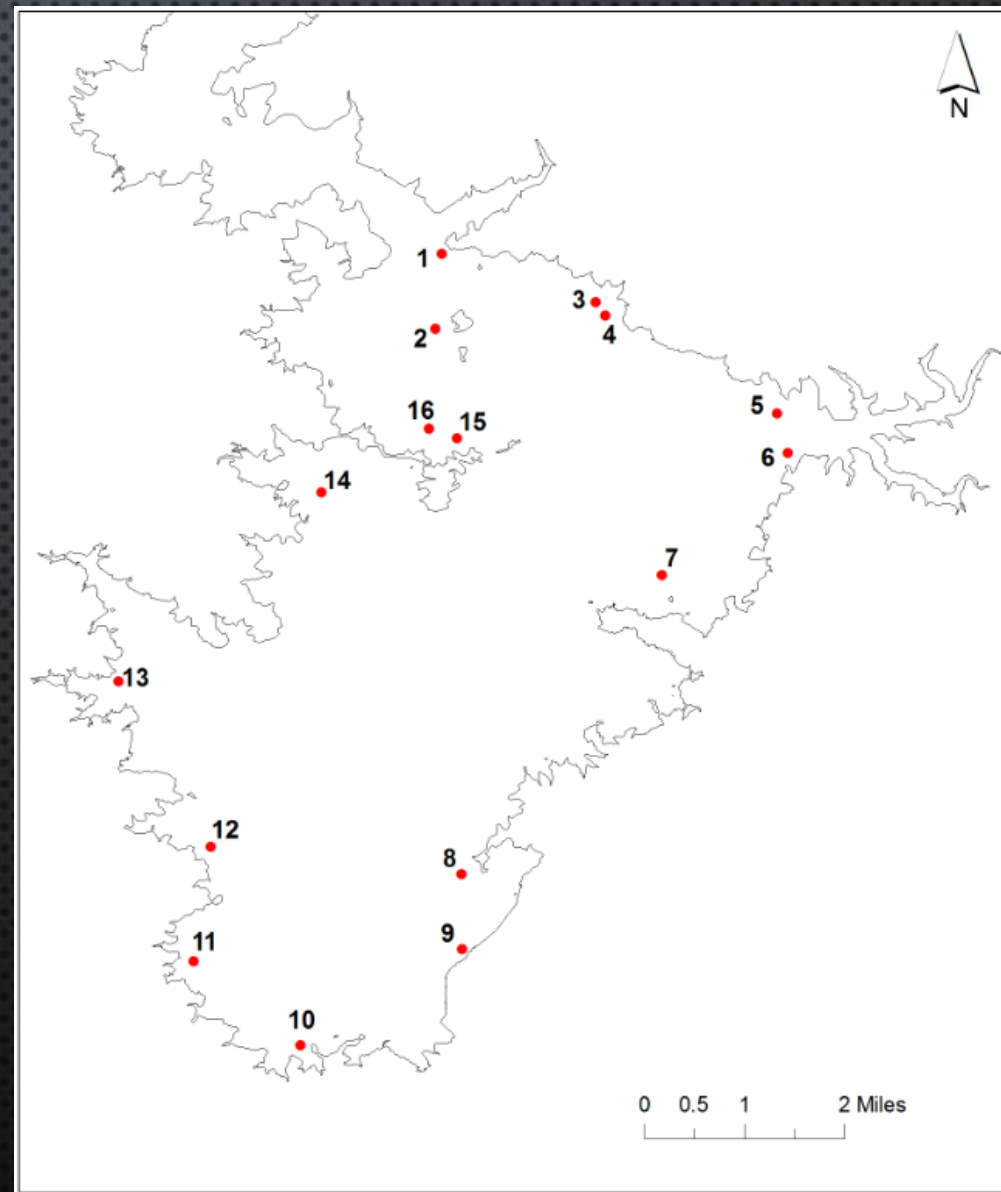


# LAKE BUCHANAN HABITAT PROJECT

- ESTABLISHED IN 2008
- SUNKEN ASHE JUNIPER TREES (MOUNTAIN CEDAR)
- LED BY FOR CHAPTER: LBCC
- 16 FISH HABITAT SITES CURRENTLY MAINTAINED



# LAKE BUCHANAN HABITAT PROJECT

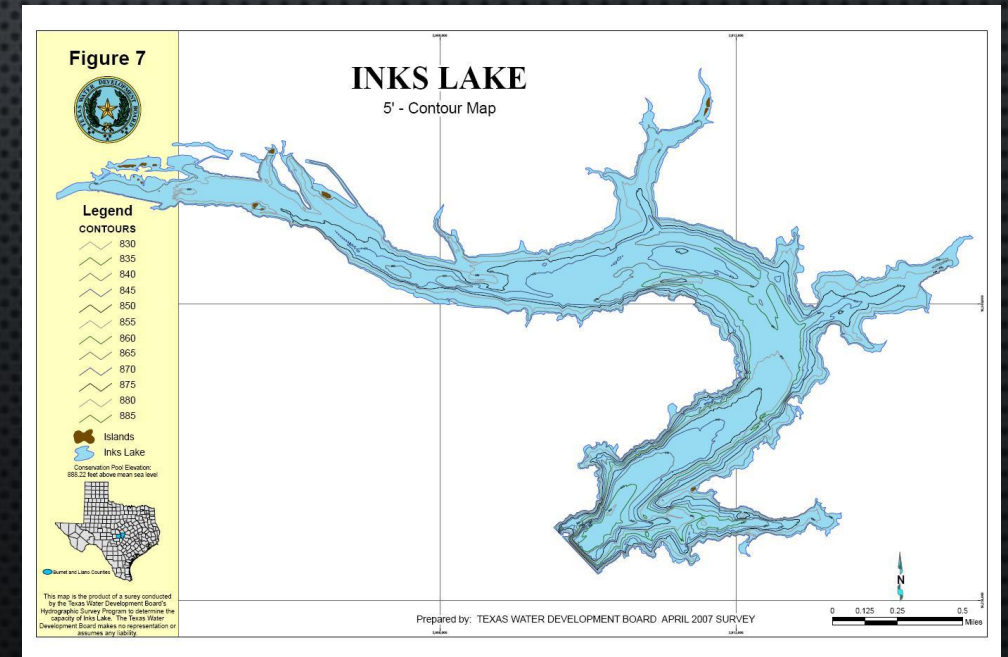


# LAKE BUCHANAN HABITAT PROJECT



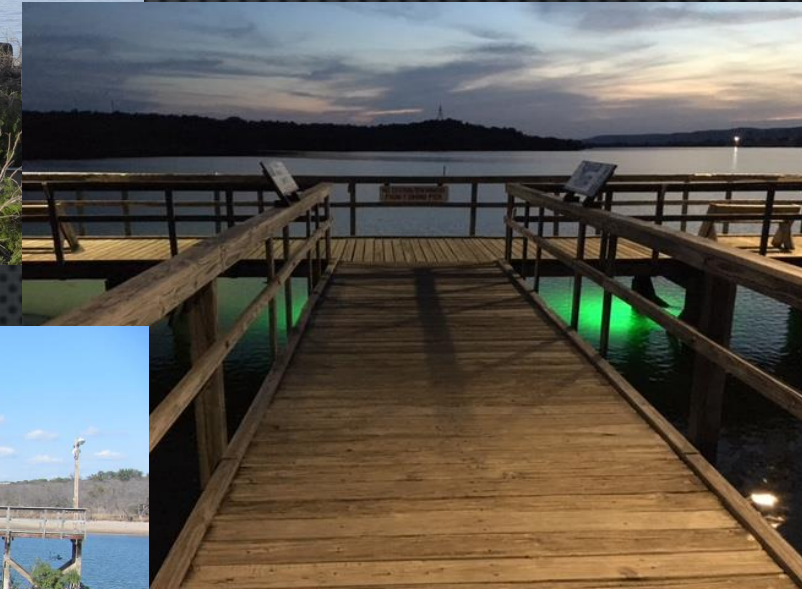
# INKS LAKE

- 768 ACRES
- BUILT IN 1938 BY LCRA
- COLORADO RIVER MAINSTEM
- SANDY AND ROCKY SUBSTRATE
- STABLE WATER LEVEL
- STATE PARK PROVIDES PUBLIC FISHING ACCESS
- BOULDERS, LIMITED AQUATIC VEGETATION, AND DEGRADED TREES SERVE AS NATURAL FISH HABITAT



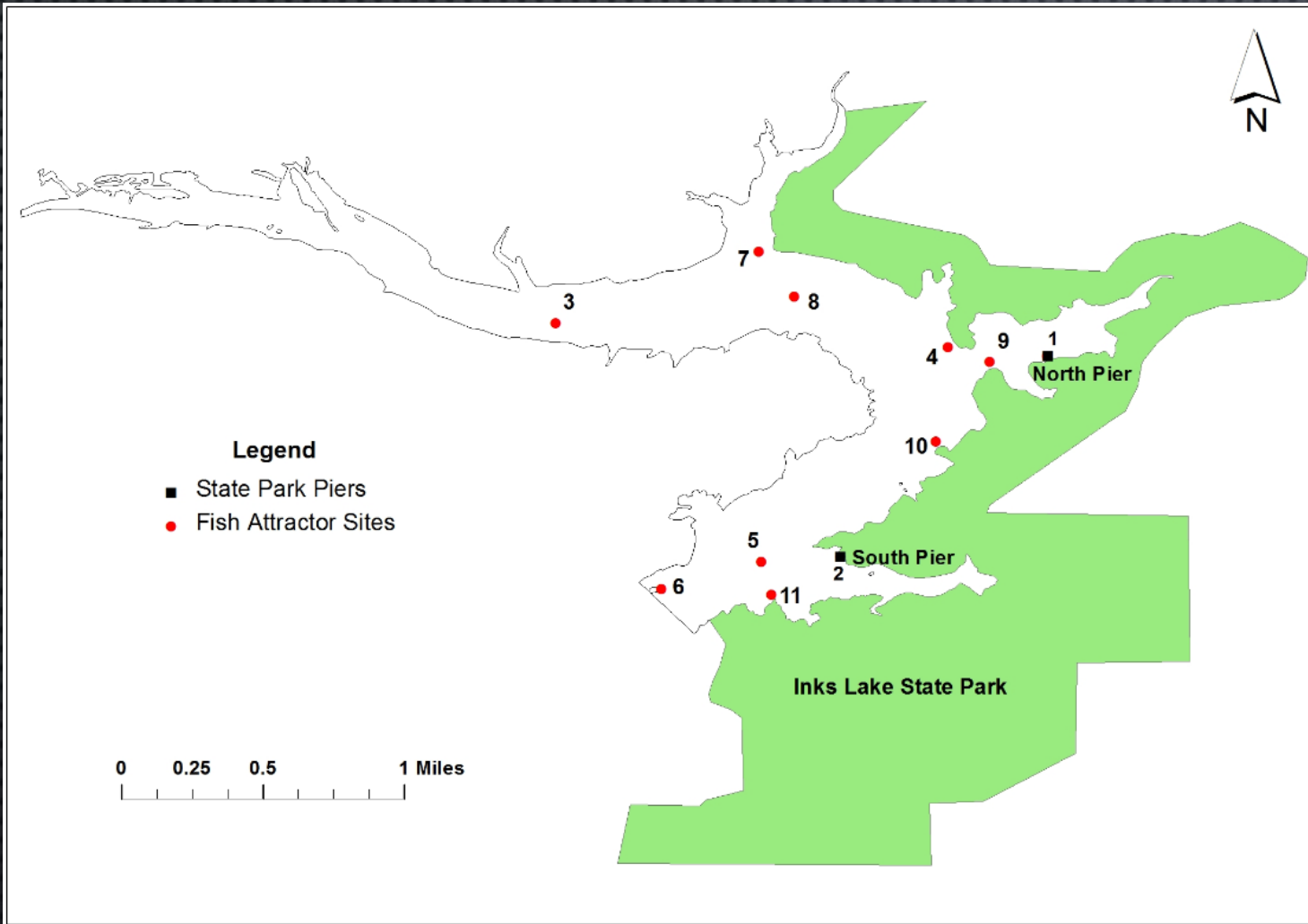
# INKS LAKE HABITAT PROJECT

- ESTABLISHED IN 2011
- SUNKEN ASHE JUNIPER TREES (MOUNTAIN CEDAR), LIMESTONE GRAVEL BEDS, AND UNDERWATER GREEN LIGHTS
- LED BY FOR CHAPTER: LBCC, BUT OTHER VOLUNTEER GROUPS ALSO PARTNERING
- 11 FISH HABITAT SITES CURRENTLY MAINTAINED





# INKS LAKE HABITAT PROJECT



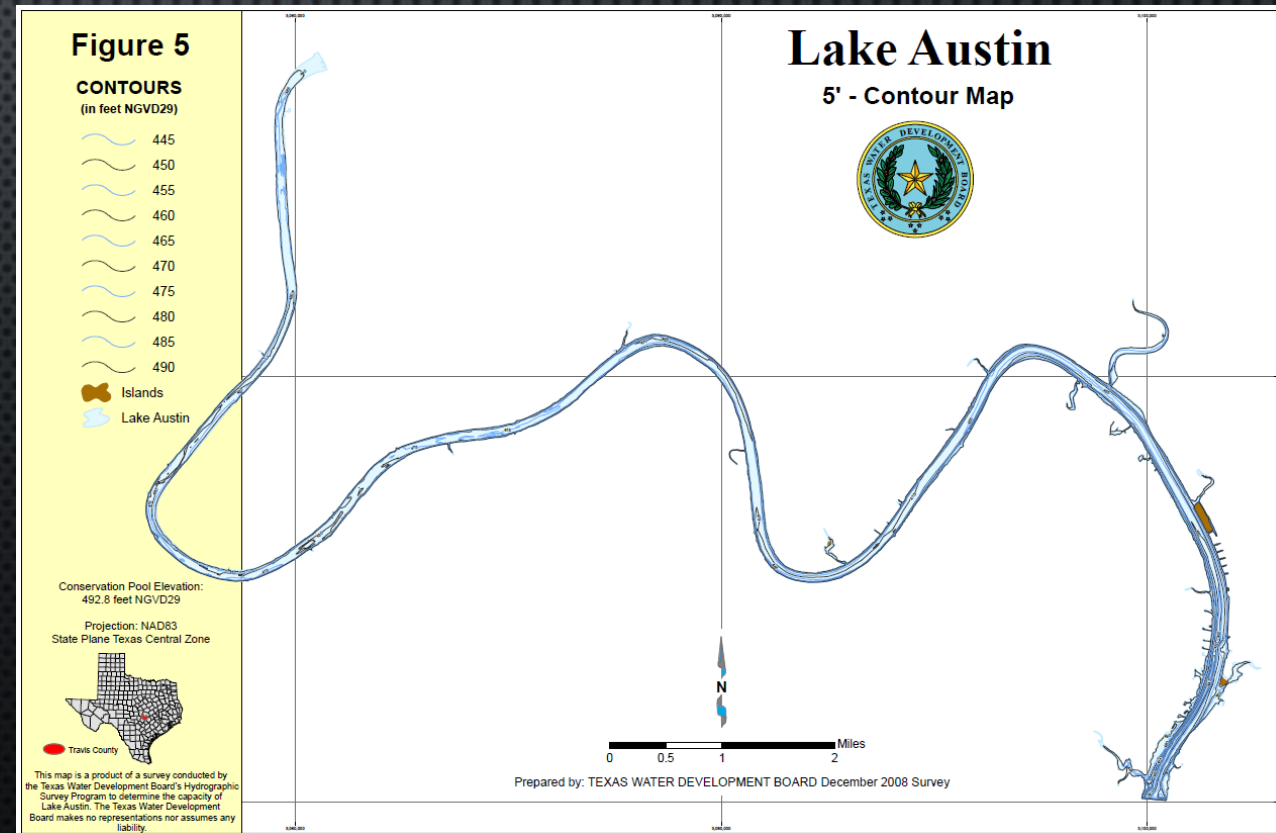
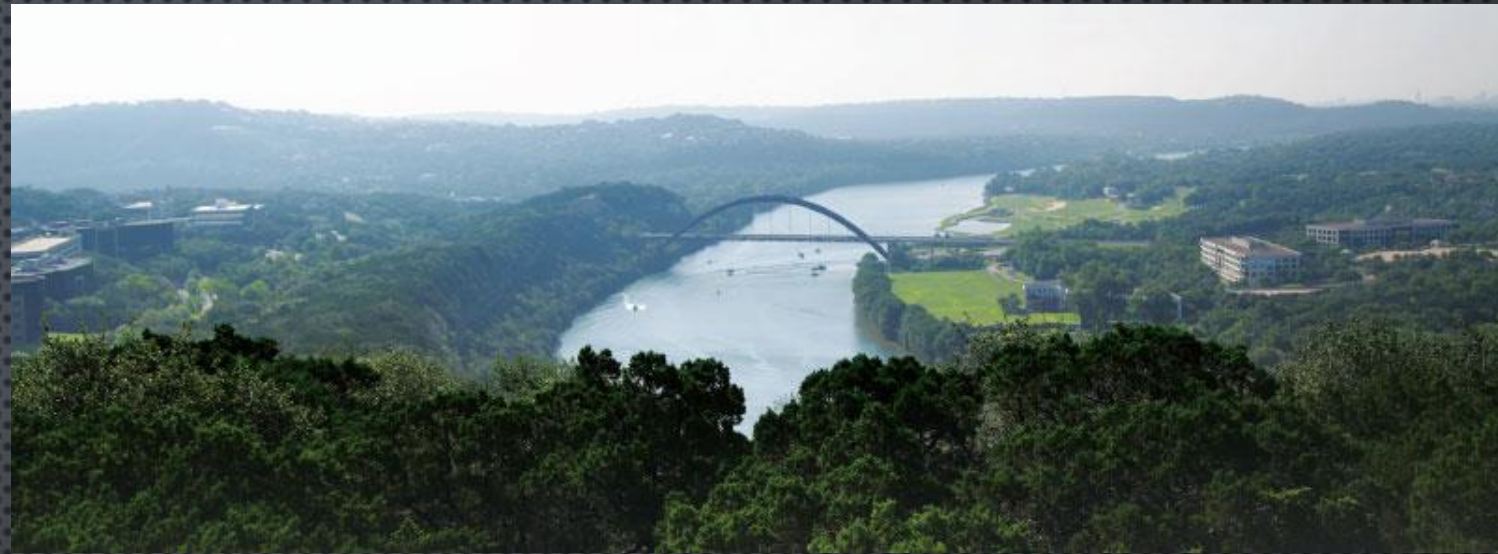
# INKS LAKE HABITAT PROJECT



# RESTORING FISH HABITAT AT LAKE AUSTIN, TEXAS

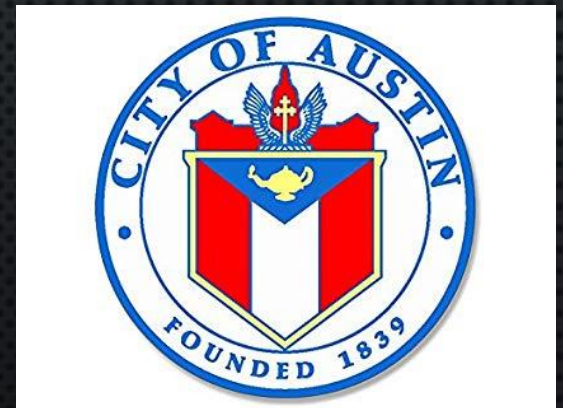
# LAKE AUSTIN

- 1,589 ACRES
- BUILT IN 1893
- COLORADO RIVER MAINSTEM
- SANDY AND ROCKY SUBSTRATE
- HISTORY OF ESTABLISHED AQUATIC VEGETATION
- BOULDERS, SUBMERSED WOODY DEBRIS, AND AQUATIC VEGETATION SERVE AS NATURAL FISH HABITAT

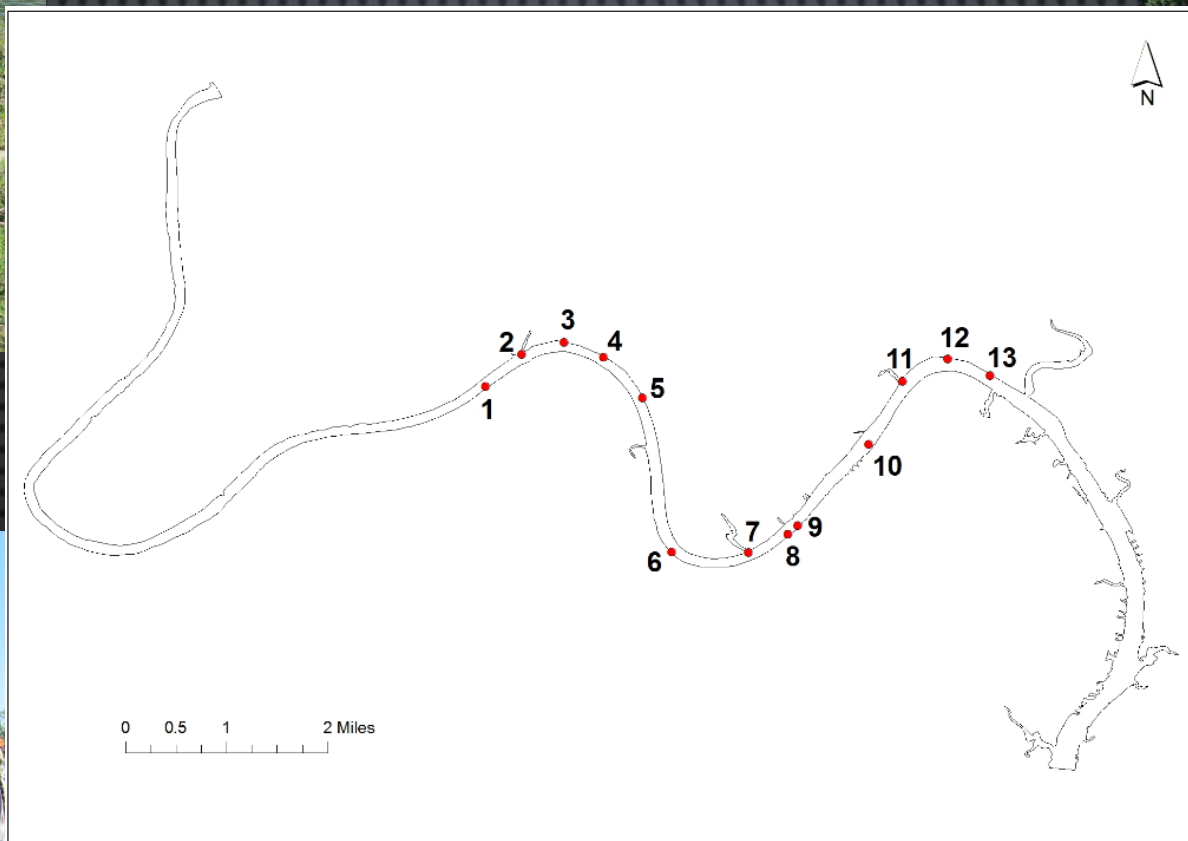


# LAKE AUSTIN HABITAT PROJECT

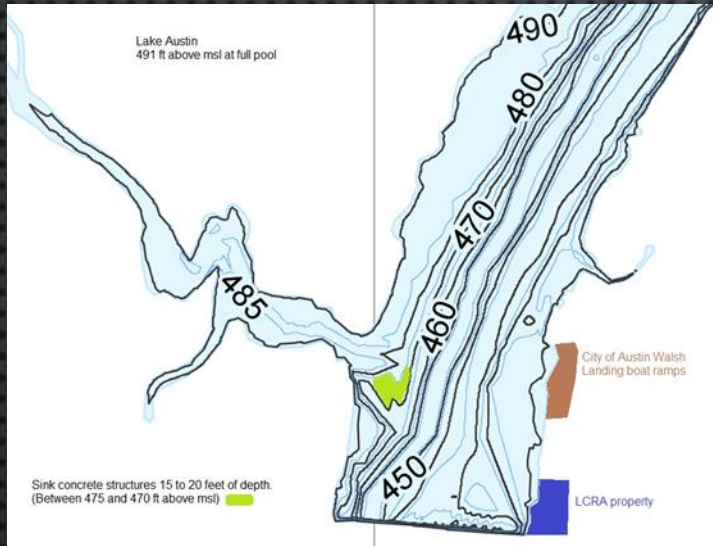
- ESTABLISHED IN 2015
- SUNKEN ASHE JUNIPER TREES  
(MOUNTAIN CEDAR)
- LED BY FOR CHAPTER: TTZ
- 14 FISH HABITAT SITES CURRENTLY  
MAINTAINED



# LAKE AUSTIN HABITAT PROJECT



# LAKE AUSTIN HABITAT PROJECT



# LAKE AUSTIN HABITAT PROJECT

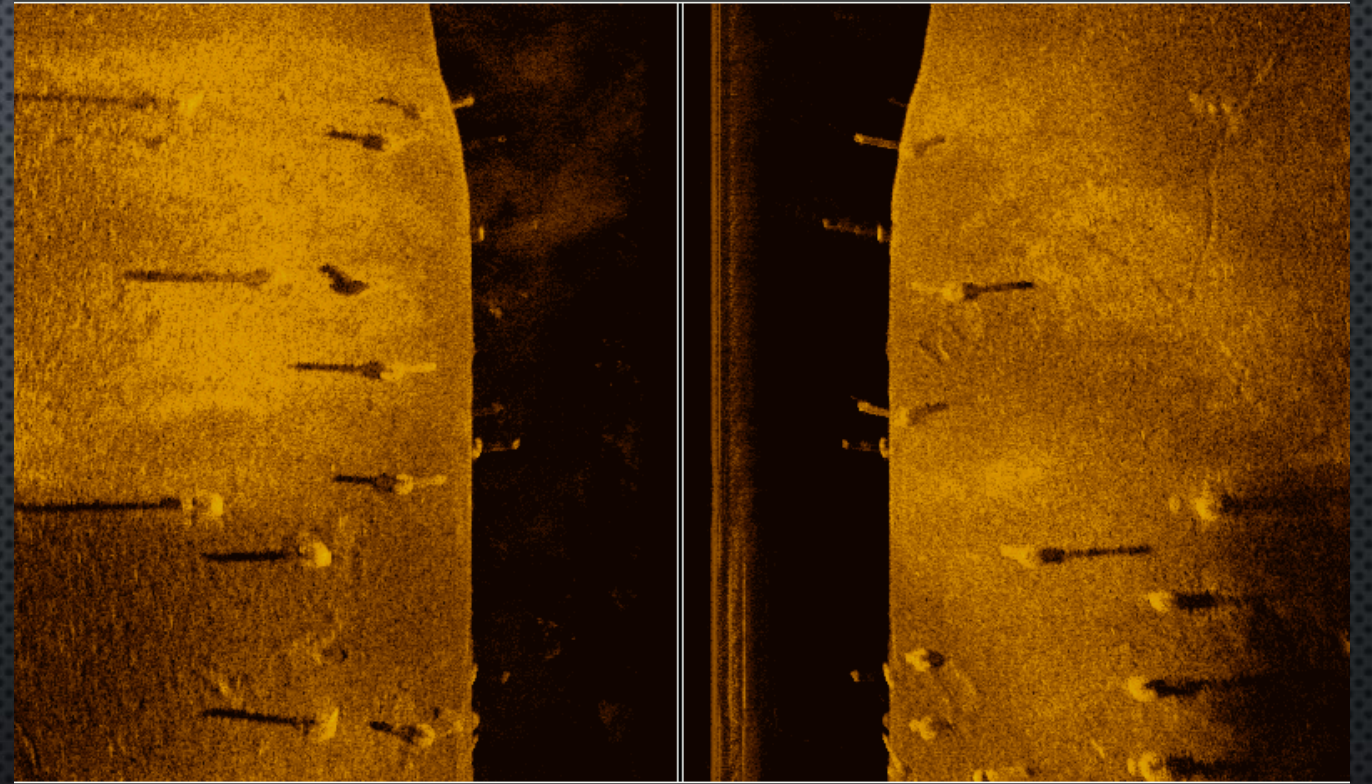




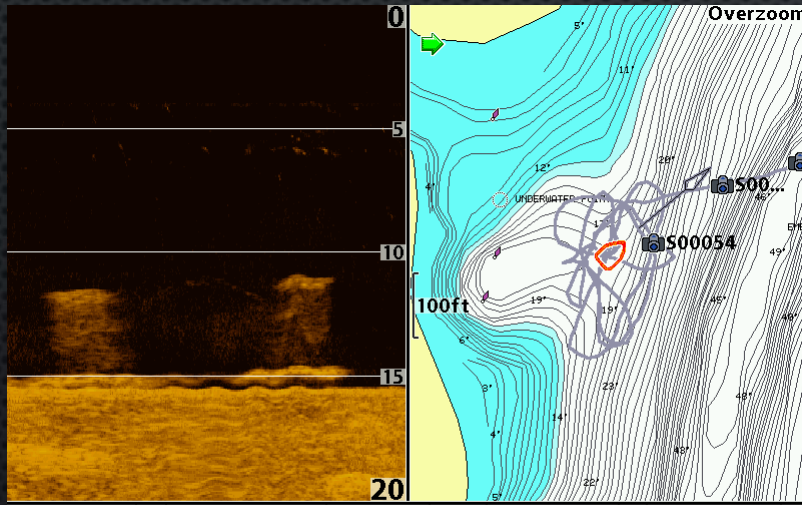
# LAKE AUSTIN HABITAT PROJECT



50 Left Right 50

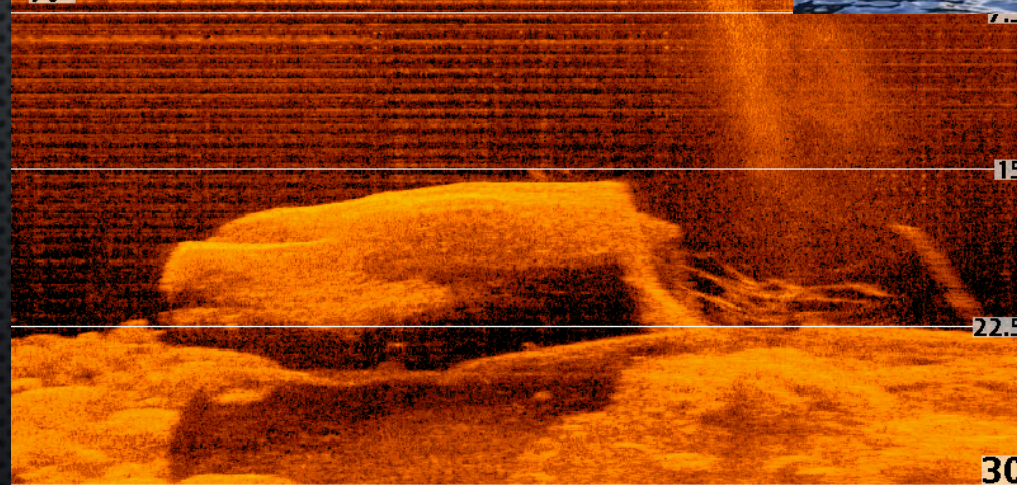


Depth	ft	Speed	mph	COG	°t	VLT	V
<b>18.3</b>			<b>4.3</b>	N 30.29647° W 097.78714°	<b>195</b>	<b>14.0</b>	



Depth	ft	Speed	mph	COG	°t	VLT	V
<b>15.3</b>			<b>0.8</b>	N 30.29659° W 097.78708°	<b>050</b>	<b>12.4</b>	

# LAKE AUSTIN HABITAT PROJECT



Depth	ft	Speed	mph	COG	°t	VLT	V
<b>24.0</b>	N 30.35316° W 097.85254°	<b>0.5</b>	<b>166</b>	<b>13.2</b>			

# TAKEAWAYS

- IMPACTFUL PROJECTS REQUIRE LOTS OF TIME, EFFORT, AND MONEY.
- IT'S HARD FOR AGENCIES TO DO IT ALONE. WE RELY ON PARTNERSHIPS.
- RFHP/FOR PROVIDE AN EXCELLENT PLATFORM TO DEVELOP THESE EFFORTS.
- SCIENCE AND EVALUATION CAN TEACH US TO BE EFFICIENT AND ADJUST OUR STRATEGIES OVER TIME.

# FISH HABITAT ENHANCEMENT IN CENTRAL TEXAS

FRIENDS OF RESERVOIRS PARTNERSHIPS

