

The background of the slide is a light gray gradient with several realistic water droplets of various sizes scattered across it. The droplets have highlights and shadows, giving them a three-dimensional appearance. The main title is centered in the upper half of the slide.

ROCKPORT RESERVOIR HABITAT AUGMENTATION

WHO NEEDS LITTORAL WEEDS ANYWAY?





FUNDING/PARTNERS

- HABITAT COUNCIL
- DIVISION OF PARKS AND RECREATION
- RFHP
- ROCKY MOUNTAIN ANGLERS (FOR CHAPTER)



SNAGS...

- MOU ISSUES
- PERSONNEL TURNOVER
- WATER USE POWER STRUGGLE

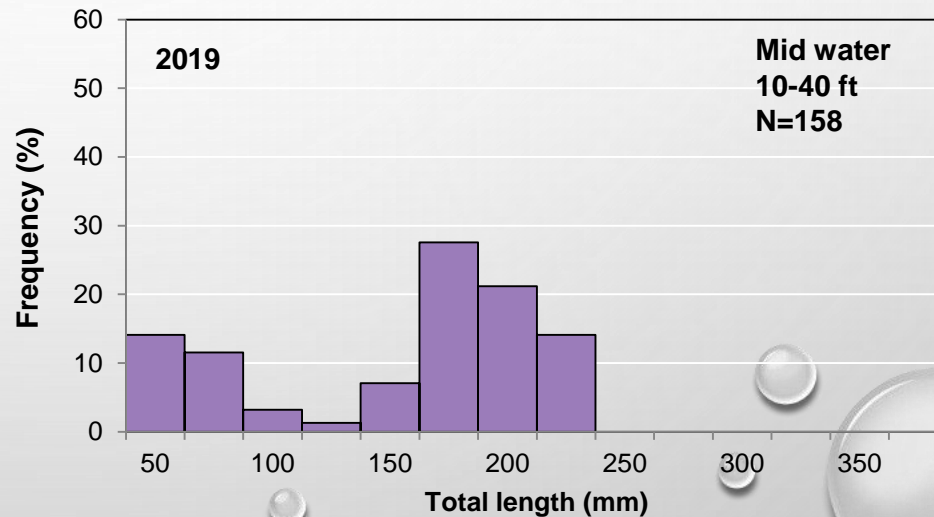
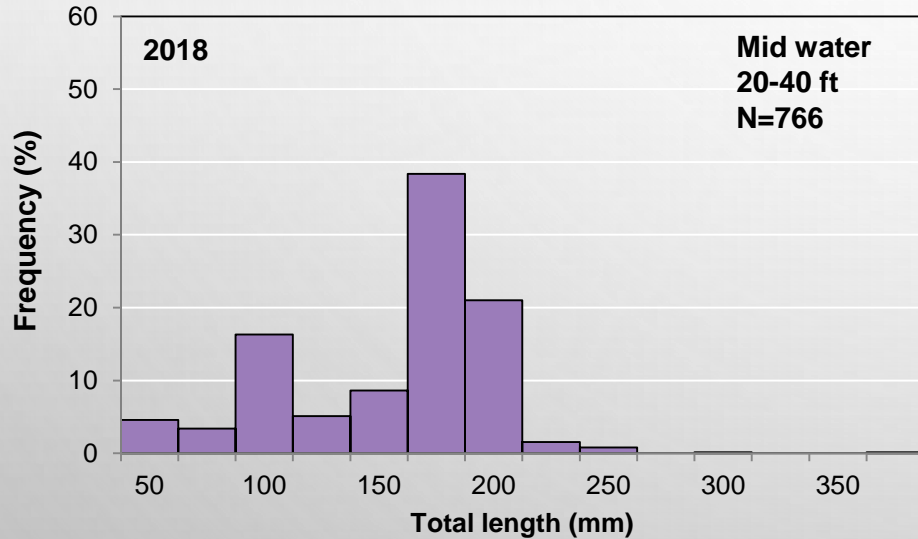
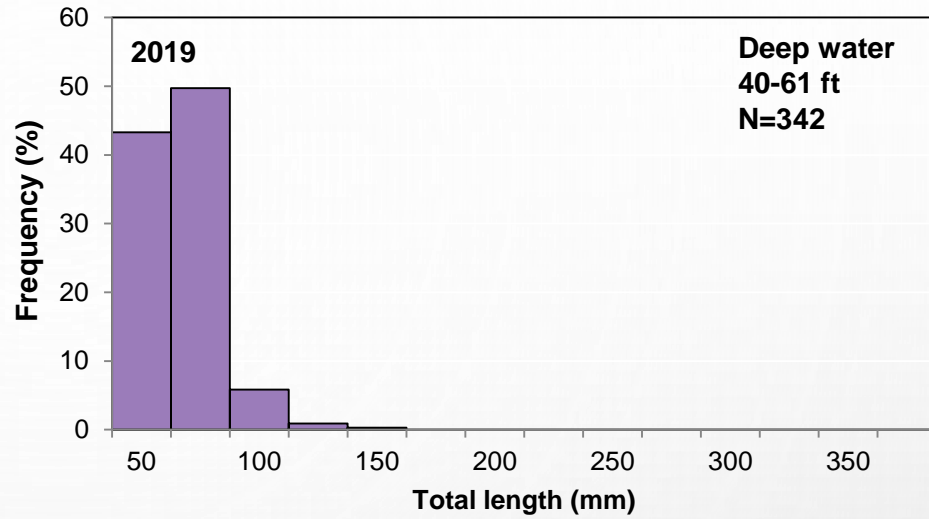
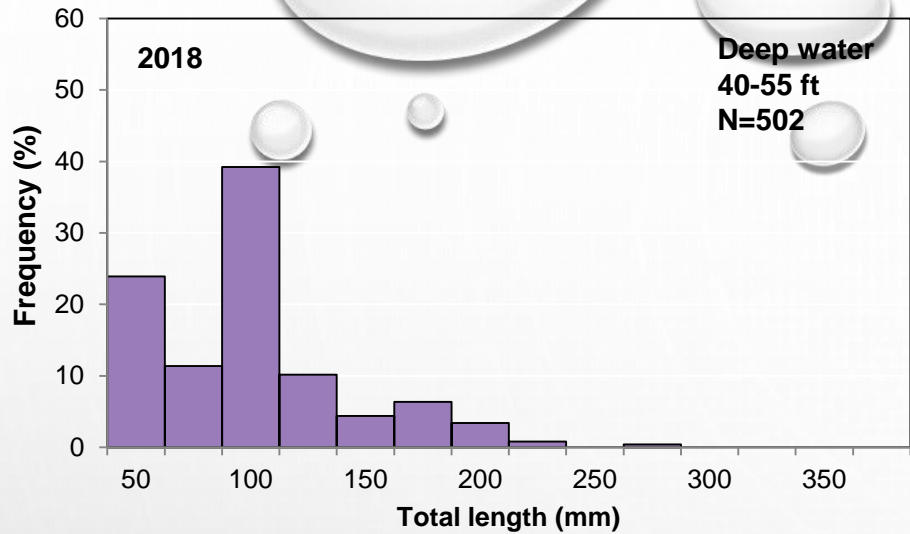
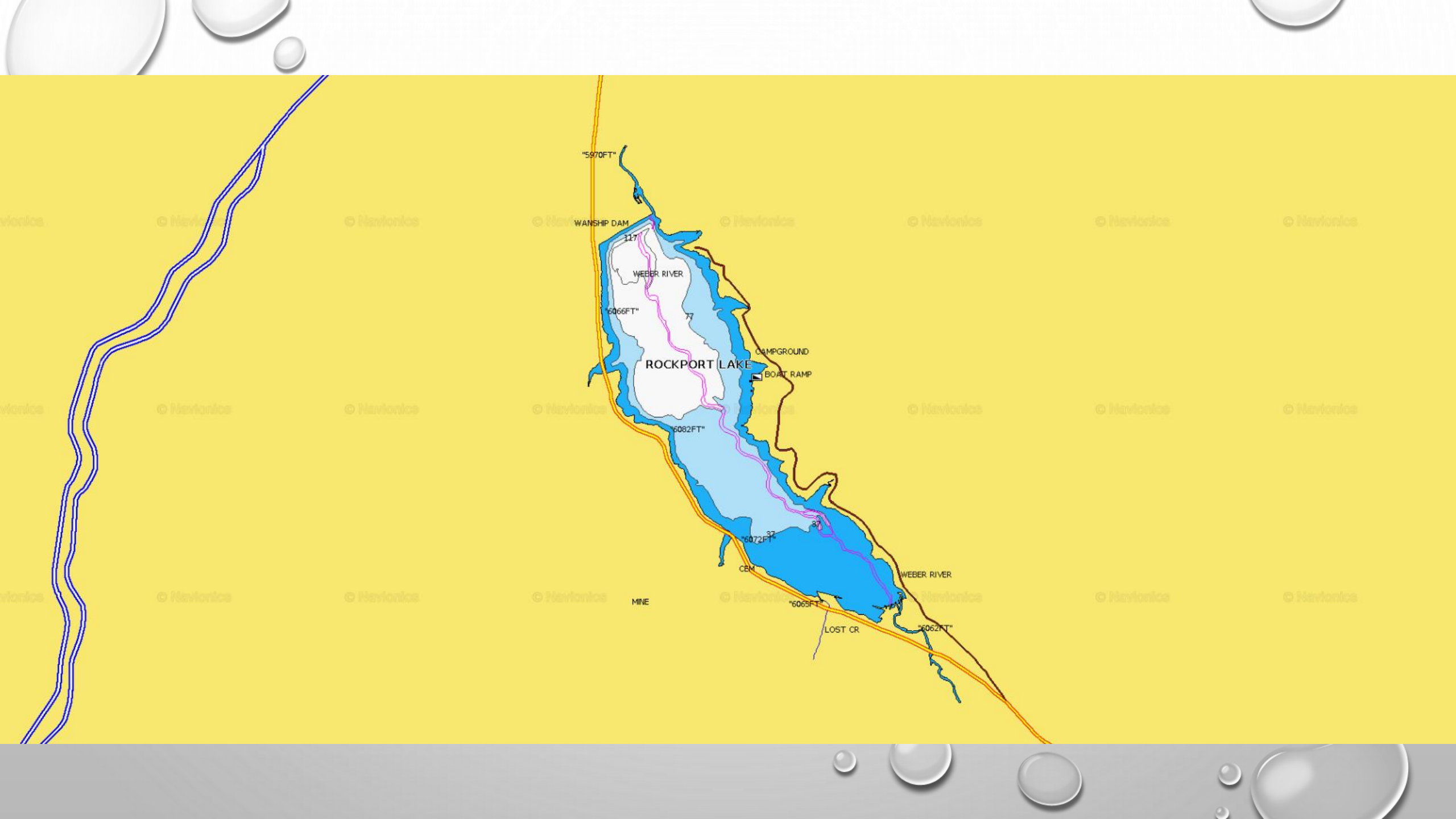


Figure 1.- Length distribution of yellow perch captured from deep and mid water nets in Rockport Reservoir in August of 2018 & 2019.



"5970FT"

WANSHIP DAM

WEBER RIVER

117

6066FT"

77

ROCKPORT LAKE

C&M PGROUND

BOAT RAMP

6082FT"

6072FT"

CEM

MINE

"6065FT"

LOST CR

WEBER RIVER

"6062FT"

© Navionics

© Navionics

© Navionics

© Navionics

© Navionics

© Navionics

© Navionics

© Navionics

© Navionics

© Navionics

© Navionics

© Navionics

© Navionics

© Navionics

© Navionics

© Navionics

© Navionics

© Navionics

© Navionics

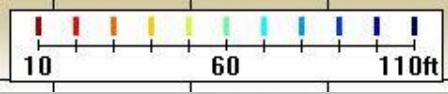
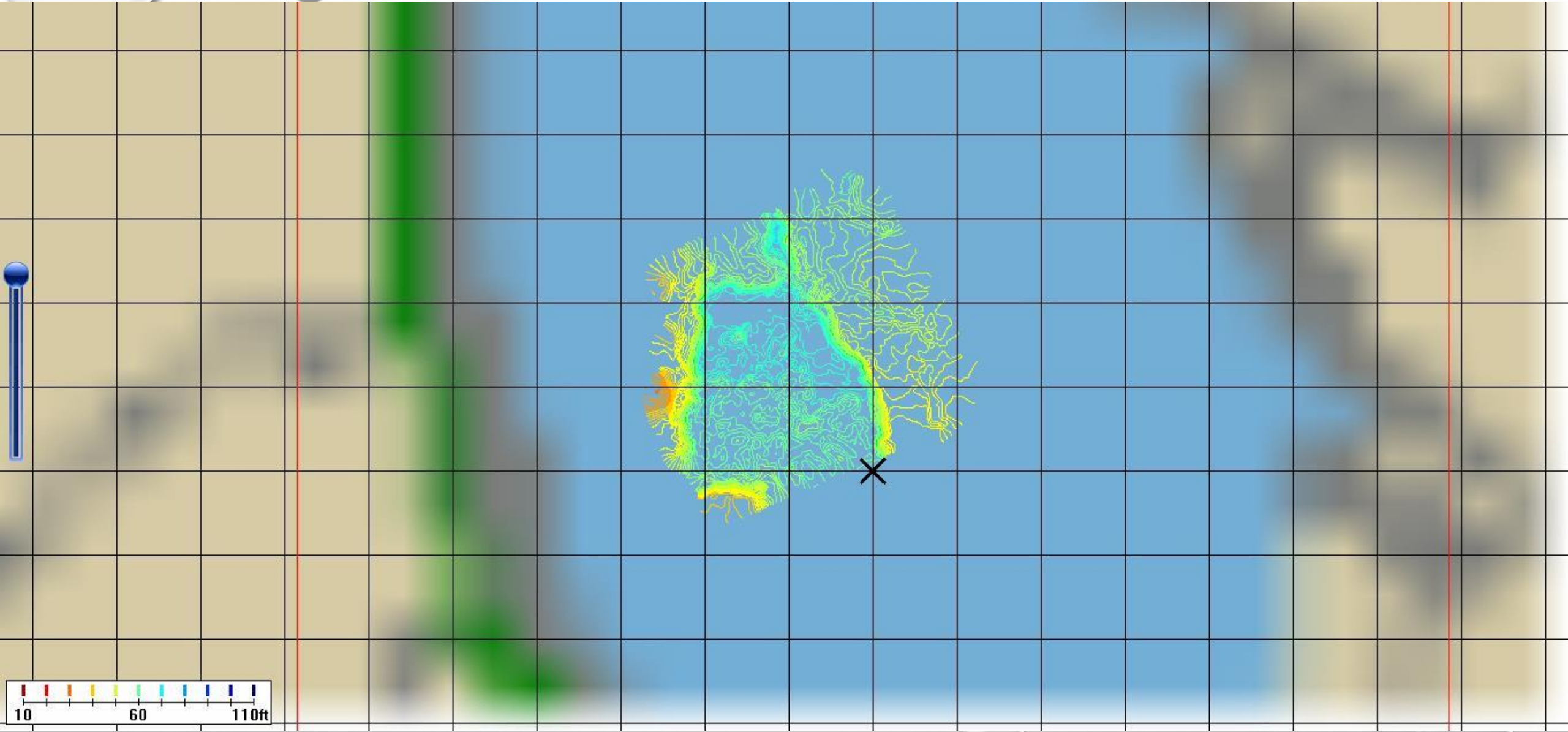
© Navionics

© Navionics

© Navionics

© Navionics

© Navionics



STRUCTURES EMPLOYED

- 'ROCK STARS' 140 (IN HOUSE MANUFACTURE)
- FISHIDING (KEEPER) 32 PLUS AN INDETERMINATE NUMBER OF 'LEFTOVERS' (~20)
- POND KING (TREES 20, SHRUBS 18)
- MOSSBACK – KING OUTDOORS (SAFE HAVEN) 20



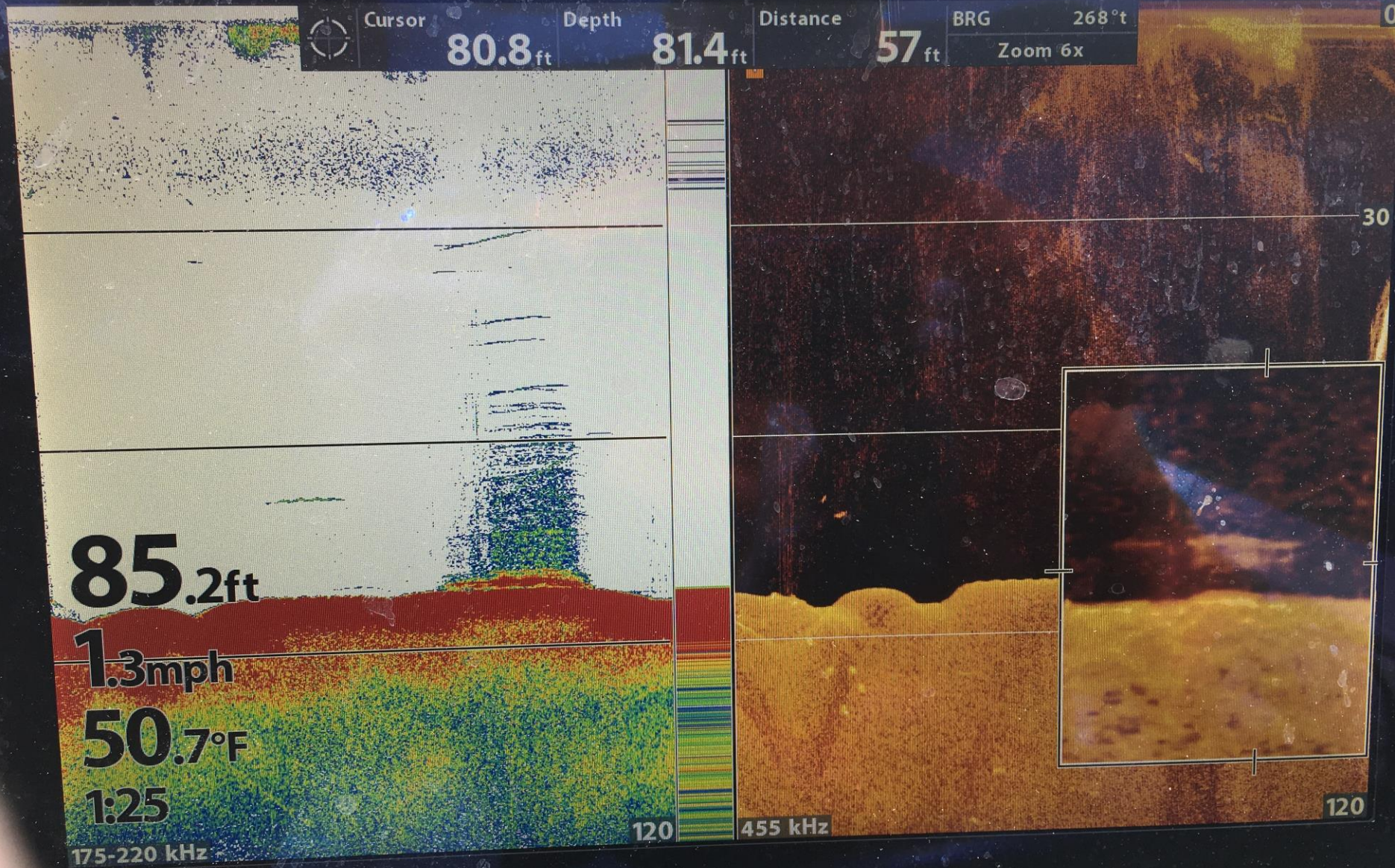








HUMMINBIRD



HELIX 12



KSL **Outdoors**